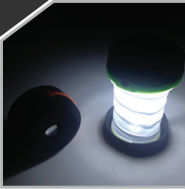


9399CL COLLAPSIBLE LANTERN



Features:

- Light compact design
- Great for emergency light and camping lantern
- Collapsible feature makes for storing and traveling with a breeze
- Nice soft touch finish
- Powered by three AA batteries (Not Included)
- Three light settings, dim, bright and flashing
- Flash light and lantern built into one unit
- Handle on top doubles as a hook to hang the piece for use as a lantern

Specifications:

Product Size:
3-3/8"W x 3-3/8"H x 1-7/8"D

Imprint Area:
1-1/2"W x 1"H

Color Options:
Green / black, orange / black

Branding Options:
Pad print

Packaging:
White tuck box

MOQ:
100pcs

Production Time:
In-house 3-5 working days
(Rush services available)

Pricing:

25: -

50: -

100: \$18.65^(R)

250: \$17.65^(R)

500: \$15.65^(R)

1000: \$14.65^(R)